

# Ventrilo

## Quick Start Guide



# Contents

Chapter 1: Downloading Ventrilo .....	3
Chapter 2: Installing .....	3
Chapter 3: Entering the Server Details .....	3
Chapter 4: Sound Setup .....	8
Chapter 5: Amplifiers .....	11

## Chapter 1: Downloading Ventrilo

To obtain a copy of Ventrilo, follow the link below. You will require the client program. Then pick the download that matches your operating system.

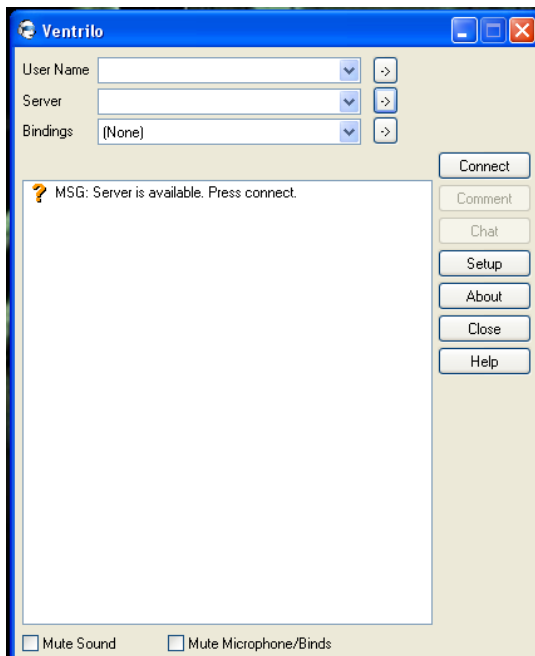
<http://www.ventrilo.com/download.php>

## Chapter 2: Installing

Installing is a matter of keep clicking Next, I Agree. The normal procedure, like any other program.

## Chapter 3: Entering the Server Details

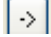
Once installed, you will need to make the Ventrilo Client connect to the server.

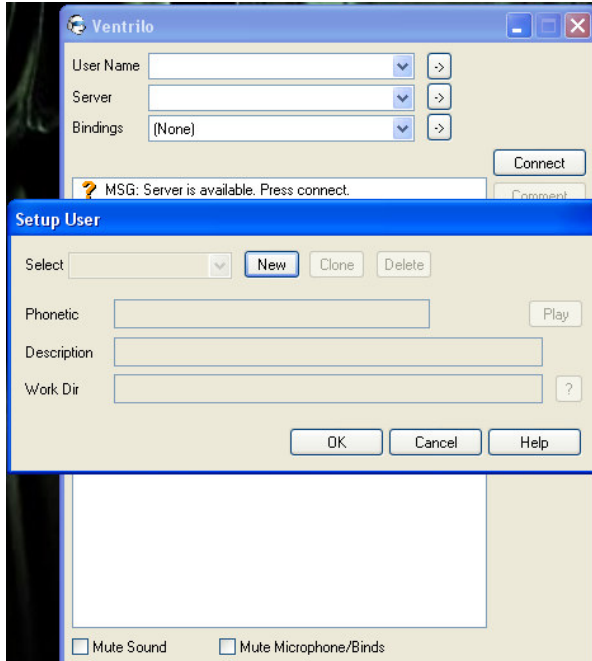


When Ventrilo starts for the first time it will look something like the screen shot to the left.

As you can see, the connection details are at the top of the window. The connect button is on the right hand side and so is the setup button. You will be using these items later.

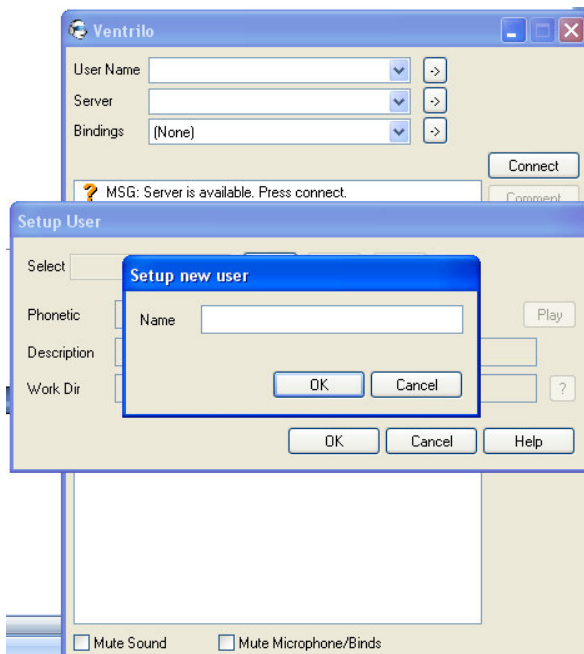
### Step 1: Adding a User.

To add a new user you need to click this button   
This button is the one that is adjacent to the user name  
Once you have done that, a new window will appear, like the one below.

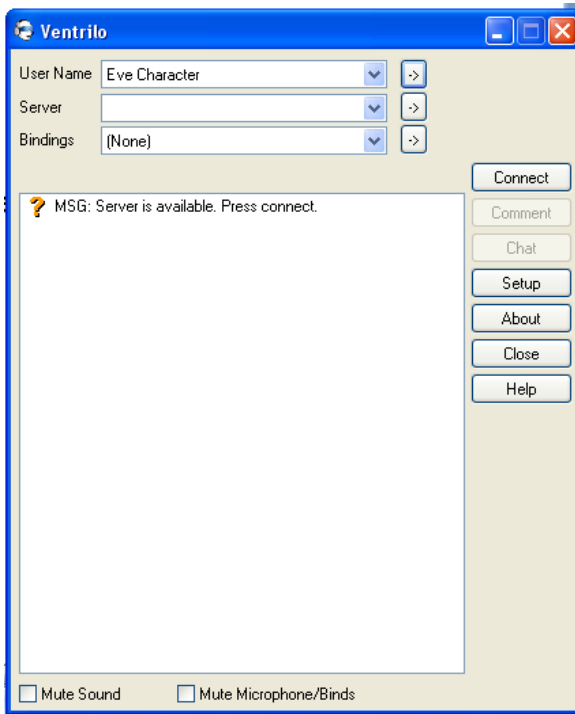


You now need to click the **new** button,  
Another new window will appear  
Enter you **EVE CHARACTER** name

Then click **OK**, and **OK** again

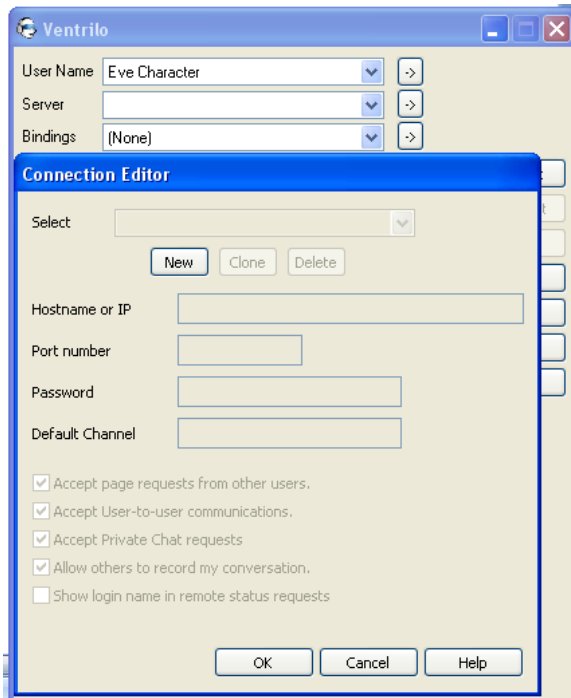


Your Ventrilo client should now look something like the screen shot below. As you can see the Eve Character name, is now in the User Name box. On your Ventrilo Client, it will say your character name.

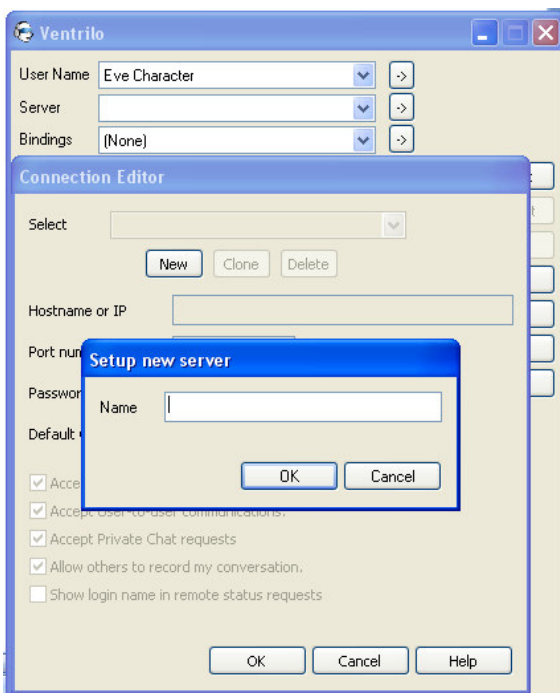


## Step 2: Adding a Server

You next need to add a server.  
 Click the arrow button next to the server name  
 It will produce a window like the one in the screen shot below

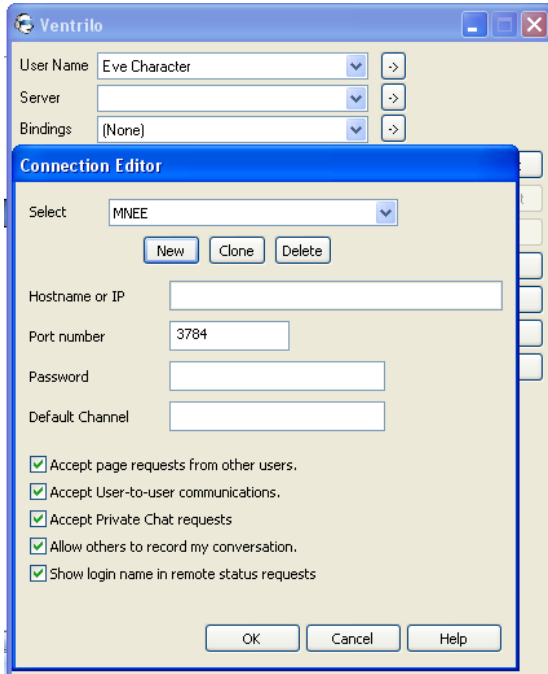


Click the **NEW** button.



Once you have clicked the NEW button, a Setup new Server window will appear.

Enter the name as MNEE, click **OK** to continue.

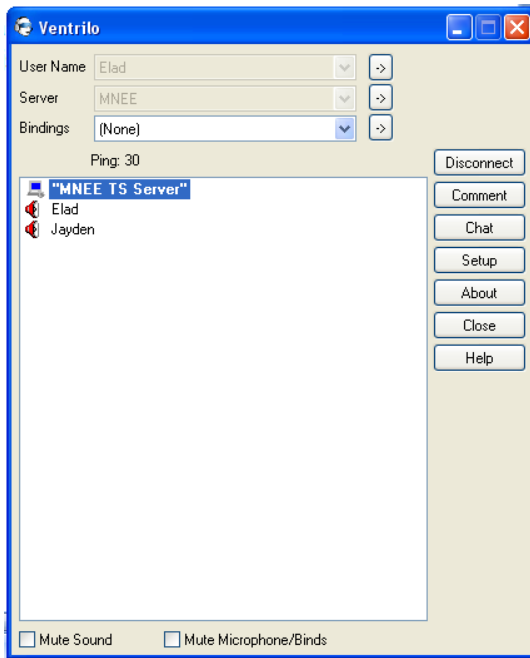


You now need to fill in some details, so that Ventrilo connects to the right server.

The Hostname or IP address: vent16.gameservers.com  
Port Number: you will have been told this via an **EVE Mail**  
Password: you will have been told this via an **EVE Mail**

Enter these details and click **OK**

You can now click the connect button to join the MNEE Ventrilo Server

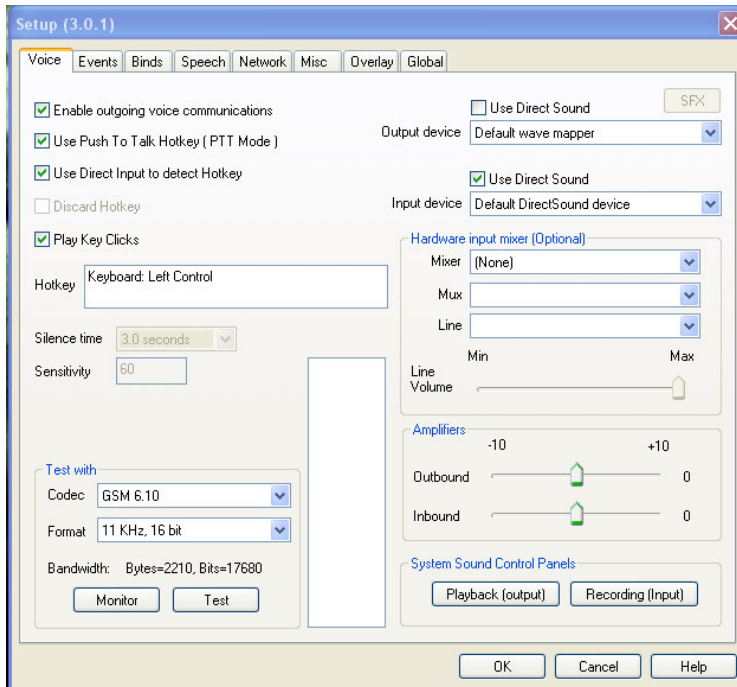


When connected, you will see list of other MNEE corporate members.

## Chapter 4: Sound Setup

The next part is to setup your sound, this will include you microphone and speaker settings.

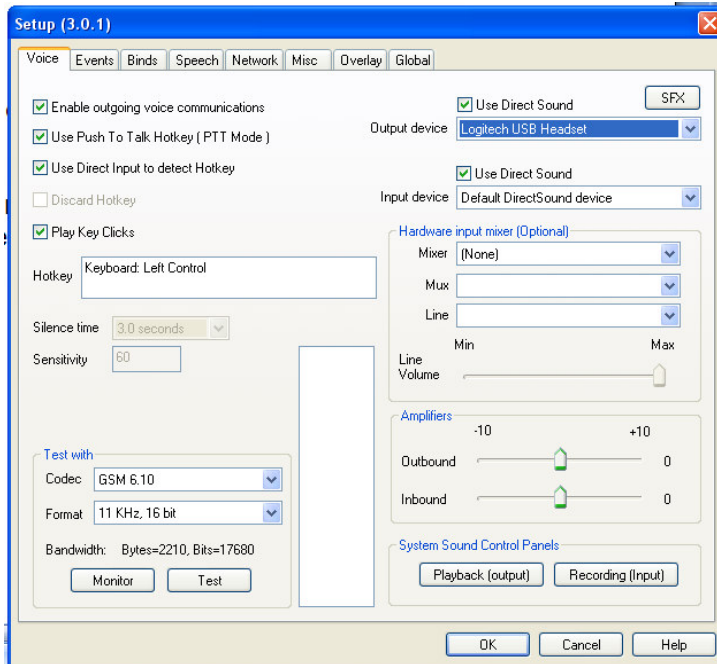
If you click on the **SETUP** button, three buttons underneath the connect button, you will get a window like the one below.



It is recommended that you use a USB headset. The manual will assume from here that you are using a USB headset.

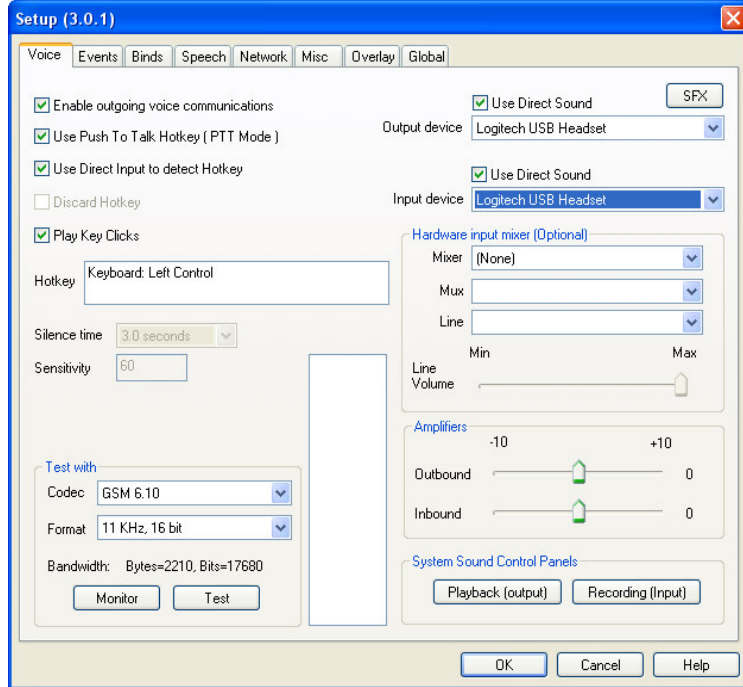
On the right hand, side of the window there is setting for Output and Input device. This is where you need to change the settings for your speakers and microphone.

You will start with the Input.



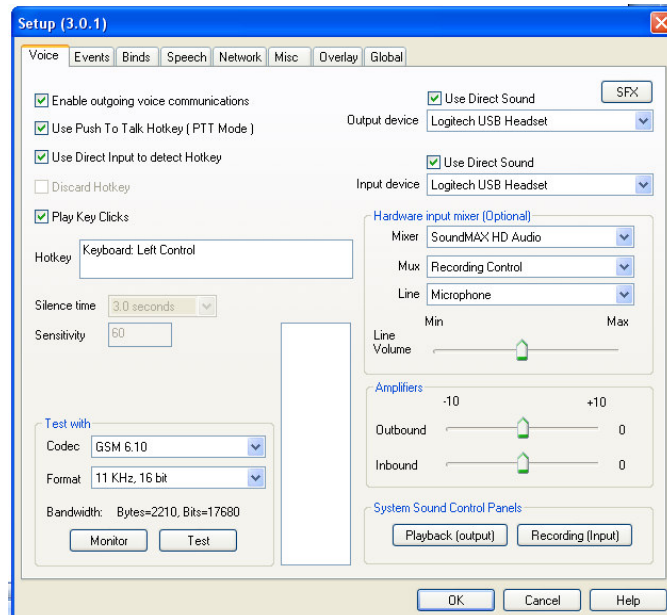
You want to **tick** the **Use Direct Sound** tick box.  
Then change the output device, using the drop down list.  
You want to pick the device that the sound will come out of.  
On my setup, it comes out of the headset speakers.

You next want to setup the input device  
 Make sure direct sound, is ticked for input device  
 Then change the device from the drop down list next to the Input Device  
 comment.  
 Your setting will now look something like the screen shot below.



## Chapter 5: Amplifiers

To adjust the sound at which you can hear people and they can hear you, you need to adjust the amplifier settings.



## Hardware Input Mixer.

Depending on your computer hardware, you may be able to use the Hardware Input Mixer.

In the Mixer drop down menu, select the hardware device you want to use. Leave the Max and Line setting as default.

## Amplifiers

The amplifiers will adjust the sound level.

Outbound – how loud or quiet you are to other people

Inbound – how loud or quiet other people are to you

When adjusting the amplifiers, you may receive a warning window, this is a notice not an error message.

If you sound too loud to someone, then you need to adjust the Outbound amplifier. Moving the slider into the minus, will make it quieter.

If you cannot hear other players, then you need to adjust the Inbound amplifier. Moving the slider into the plus, will make sounds louder.

Have Fun

MNEE